

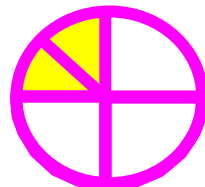
# Mermaid-1 (WAPET, 1979)

Dry - Off Structure

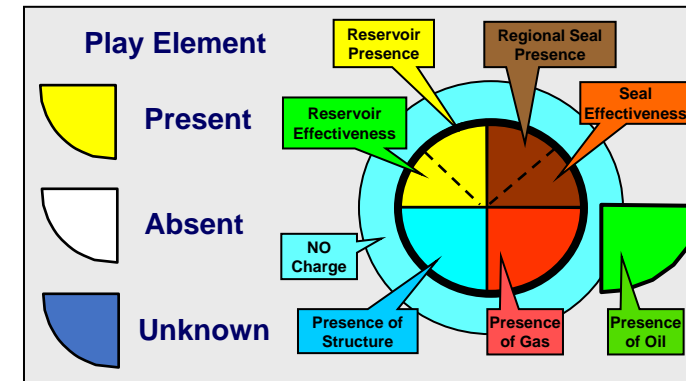
Lwr Cret  
128T\_MAT12  
(M.australis)



Lwr Triassic  
157S\_JO/243T  
(Dorado Equiv.)



Permian  
250M\_TR  
(Chinty Fm)

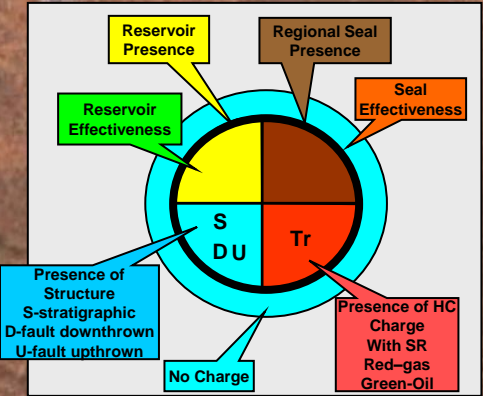
















1. Levels should be under tabs
2. Tertiary only open (to indicate which wells have been done)
3. Background (google or other maps like gravity and magnetics or sediment thickness– will give you this later)
4. Flat image that needs to be adjusted with zoom or dynamic input image (can be changed in the software)
5. Can we aim for end this month (end oct 2022) for this pls?
6. This will be a free software for users to upload on the phone and pcs
7. Will talk later



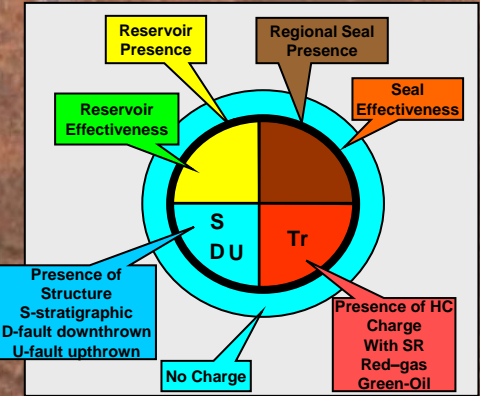
Tertiary  
(complimentary)



-  Play Element Present
-  Play Element Uncertain
-  Play Element Absent
-  Play Element Unknown
- NR Unit Not Reached
- NP Unit Not Present
-  Tertiary (complimentary)
-  Upr. Cretaceous (above 123T\_KA)
-  Lwr Cretaceous
-  Upr Jurassic
-  Mid-Lwr Jurassic
-  Upr Triassic
-  Lwr Triassic
-  Permian



Lwr Cret

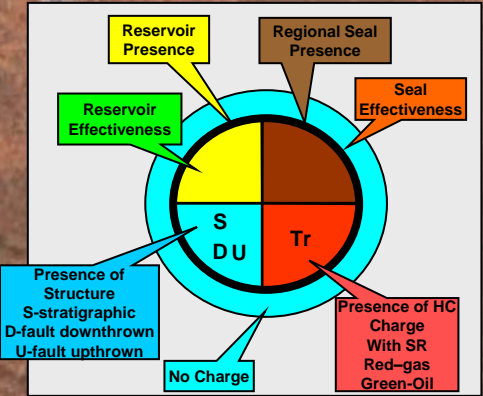


- Play Element Present
- Play Element Uncertain
- Play Element Absent
- Play Element Unknown
- NR Unit Not Reached
- NP Unit Not Present
- Tertiary (complimentary)
- Upr. Cretaceous (above 123T\_KA)
- Lwr Cretaceous
- Upr Jurassic
- Mid-Lwr Jurassic
- Upr Triassic
- Lwr Triassic
- Permian



Upr Jur

NP

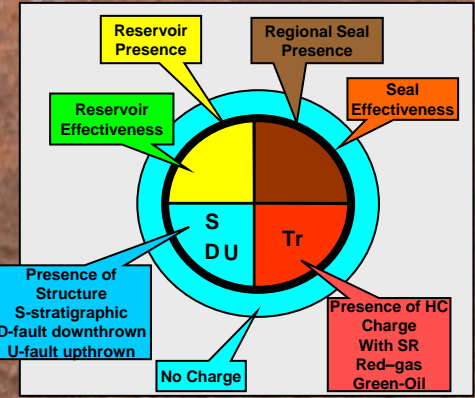


- Play Element Present
- Play Element Uncertain
- Play Element Absent
- Play Element Unknown
- NR Unit Not Reached
- NP Unit Not Present
- Tertiary (complimentary)
- Upr. Cretaceous (above 123T\_KA)
- Lwr Cretaceous
- Upr Jurassic
- Mid-Lwr Jurassic
- Upr Triassic
- Lwr Triassic
- Permian



M-L Jur

NP

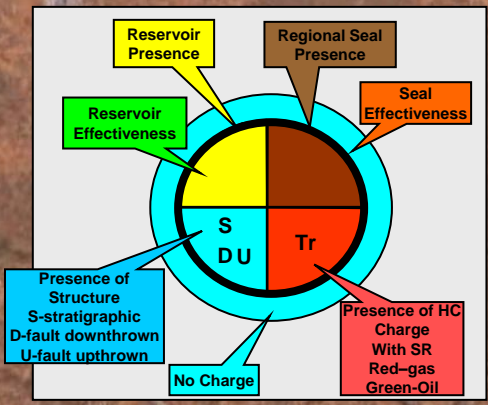


- Play Element Present
- Play Element Uncertain
- Play Element Absent
- Play Element Unknown
- NR Unit Not Reached
- NP Unit Not Present
- Tertiary (complimentary)
- Upr. Cretaceous (above 123T\_KA)
- Lwr Cretaceous
- Upr Jurassic
- Mid-Lwr Jurassic
- Upr Triassic
- Lwr Triassic
- Permian



Upr Trias

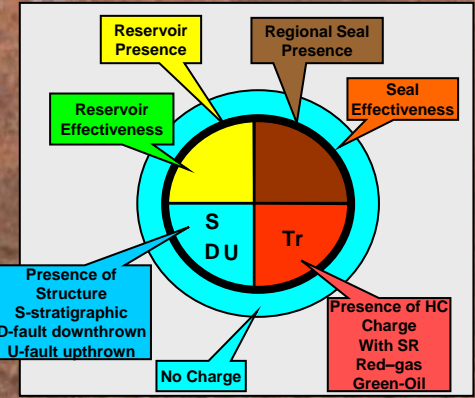
NP



- Play Element Present
- Play Element Uncertain
- Play Element Absent
- Play Element Unknown
- NR Unit Not Reached
- NP Unit Not Present
- Tertiary (complimentary)
- Upr. Cretaceous (above 123T\_KA)
- Lwr Cretaceous
- Upr Jurassic
- Mid-Lwr Jurassic
- Upr Triassic
- Lwr Triassic
- Permian



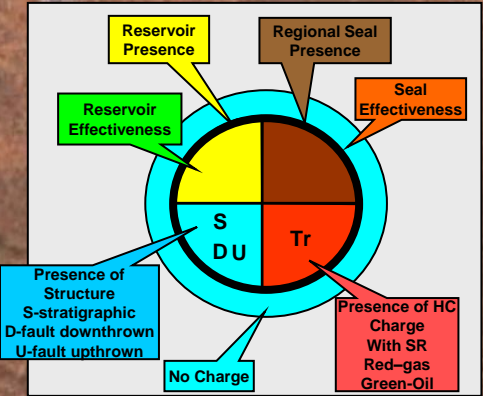
Lwr Triassic



- Play Element Present
- Play Element Uncertain
- Play Element Absent
- Play Element Unknown
- NR Unit Not Reached
- NP Unit Not Present
- Tertiary (complimentary)
- Upr. Cretaceous (above 123T\_KA)
- Lwr Cretaceous
- Upr Jurassic
- Mid-Lwr Jurassic
- Upr Triassic
- Lwr Triassic
- Permian



Permian

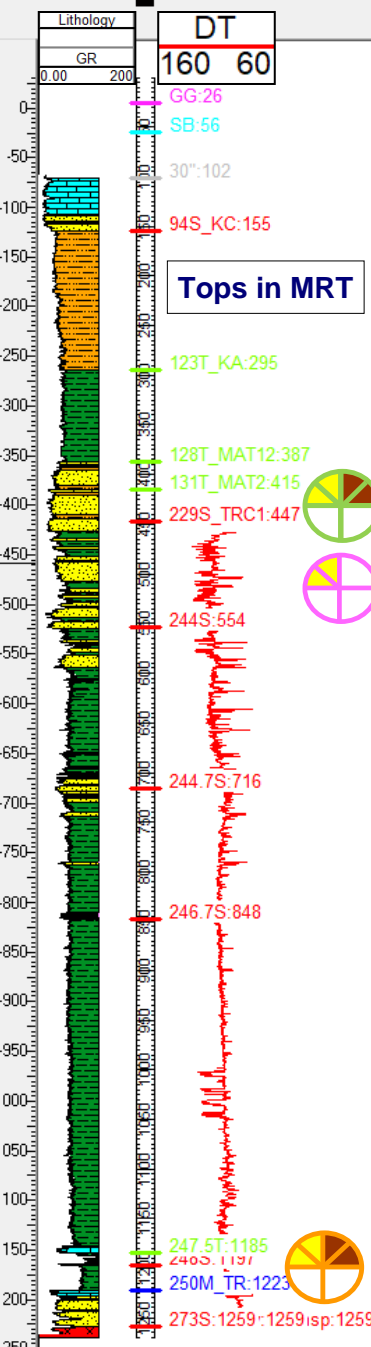


- Play Element Present
- Play Element Uncertain
- Play Element Absent
- Play Element Unknown
- NR Unit Not Reached
- NP Unit Not Present
- Tertiary (complimentary)
- Upr. Cretaceous (above 123T\_KA)
- Lwr Cretaceous
- Upr Jurassic
- Mid-Lwr Jurassic
- Upr Triassic
- Lwr Triassic
- Permian

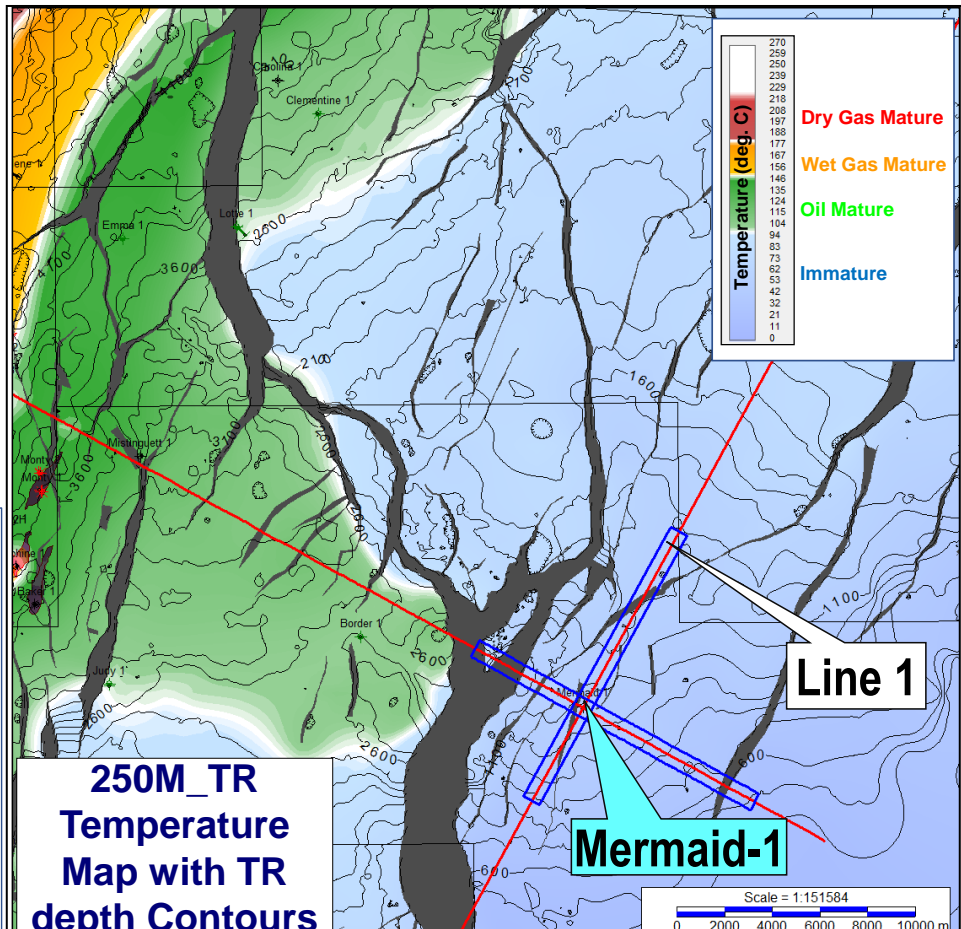
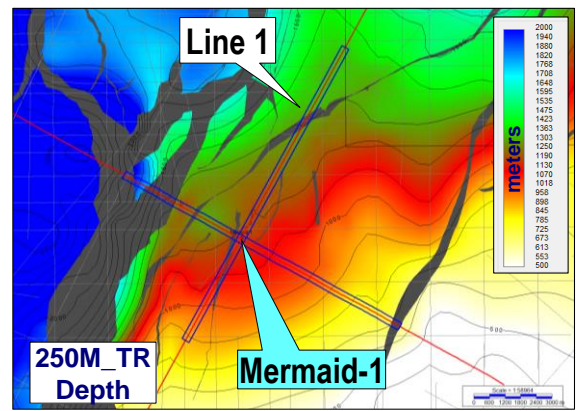
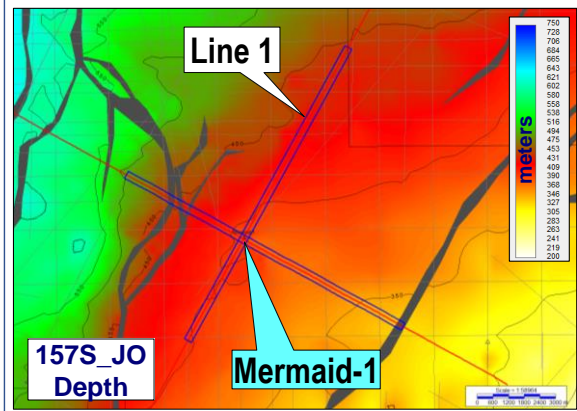
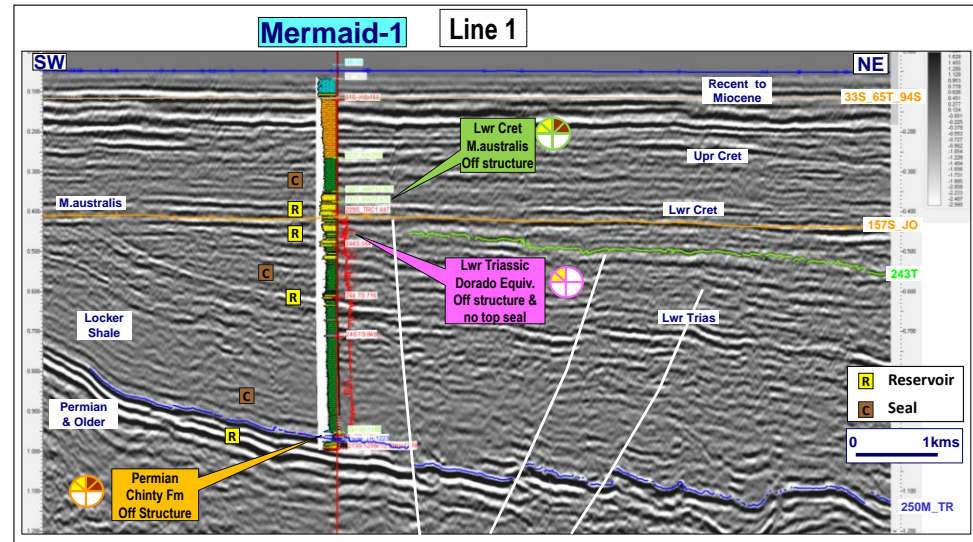
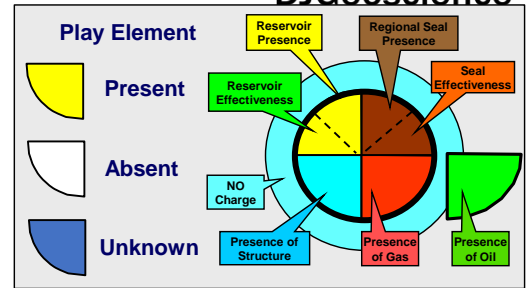


Mermaid-1

Mermaid-1 (WAPET, 1979)  
Dry - Off Structure



Play Level	Reservoir		Seal		Charge	Structure
	Presence	Effective	Presence	Effective		Drilled on 2D
Lwr Cret (M.australis/128T_MAT12)						
Lwr Trias (157S_JO/ 243T Dorado equiv.)						
Top Permian (250M_TR)						

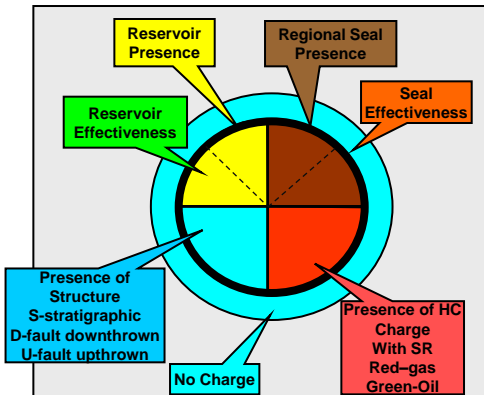
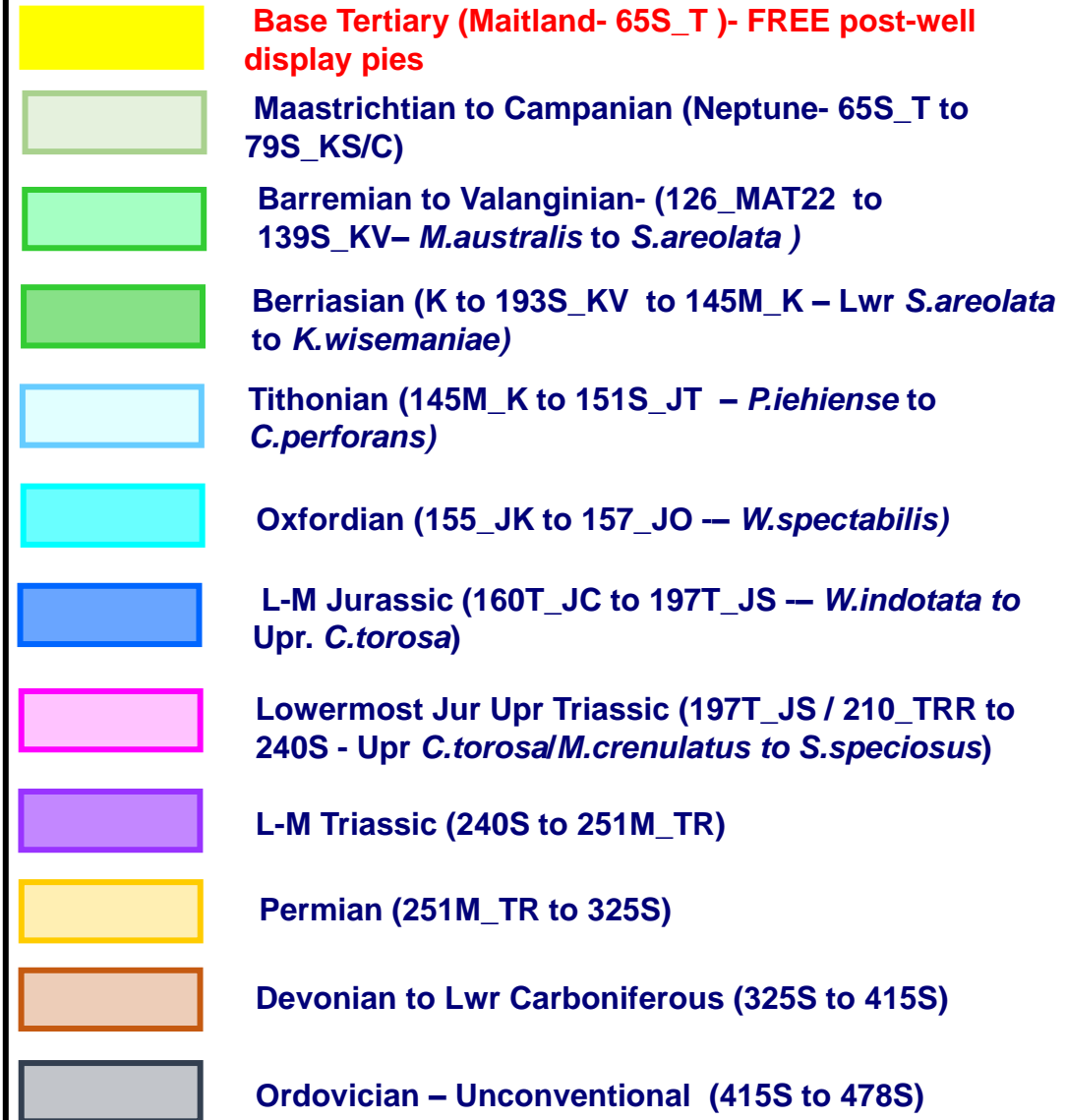
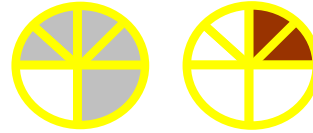
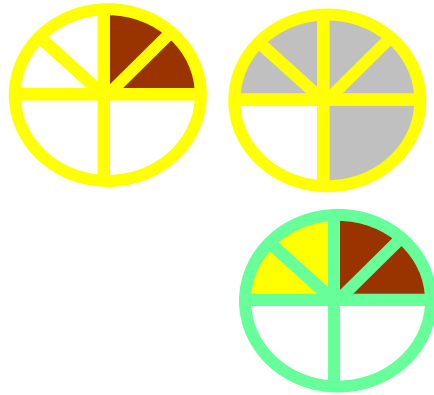




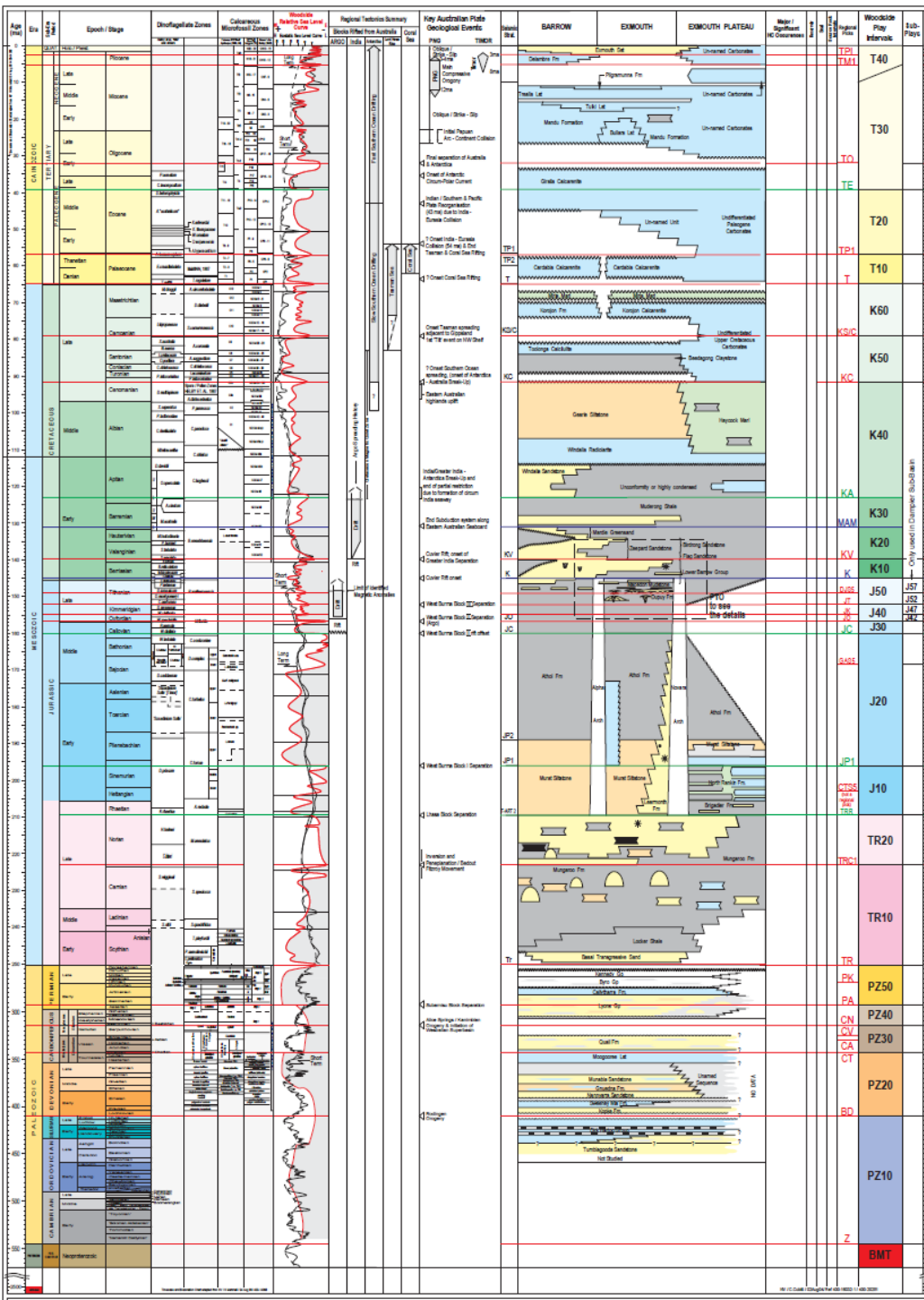


DJGeoscience

## Reservoir/Seal Layers (Kingdom polygons & Shape Files)







1.6S  
5.5S

## DJGeoscience Terminology



# DJGeoscience

## Reservoir/Seal Layers (Kingdom polygons & Shape Files)

32S\_TO  
39T

55S  
65S\_T

79S\_KS/C  
94S\_KC

123T\_KA  
126T\_MAT22

139S\_KV

145M\_K 151S\_JT

157S\_JO 154S\_JK

160T\_JC

197T\_JS

210T\_TRR

229S\_TRC1

240S

251 M TR

273S 280T

325S 280

415S

478S

### Base Tertiary (Maitland- 65S\_T )- FREE post-well display pies

**Maastrichtian to Campanian (Neptune- 65S\_T to 79S\_KS/C)**

**Barremian to Valanginian- (126\_MAT22 to 139S\_KV- *M.australis* to *S.areolata* )**

**Berriasian (K to 193S\_KV to 145M\_K – Lwr *S.areolata* to *K.wisemaniae*)**

**Tithonian (145M\_K to 151S\_JT – *P.iehiense* to *C.perforans*)**

### Oxfordian (155\_JK to 157\_JO -- *W.spectabilis*)

**L-M Jurassic (160T\_JC to 197T\_JS — *W.indotata* to Upr. *C.torosa*)**

**Lowermost Jur Upr Triassic (197T\_JS / 210\_TRR to 240S - Upr *C.torosa*/*M.crenulatus* to *S.speciosus*)**

## L-M Triassic (240S to 251M\_TR)

## Permian (251M\_TR to 325S)

### Devonian to Lwr Carboniferous (325S to 415S)

### Ordovician – Unconventional (415S to 478S)